



METAMORPHOSIS INSECTA

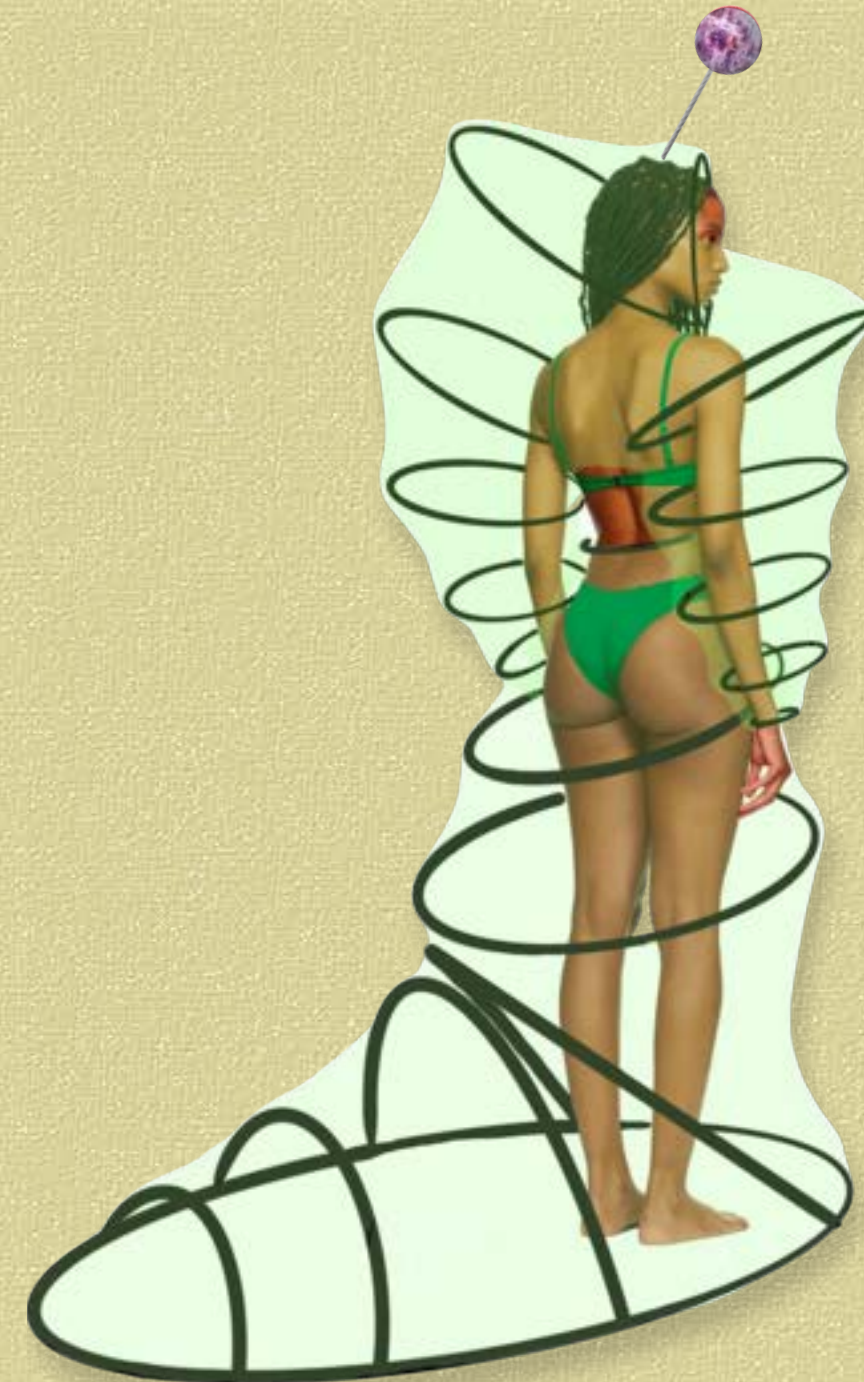
MATHILDA SINAGRA

DESIGNER STATEMENT

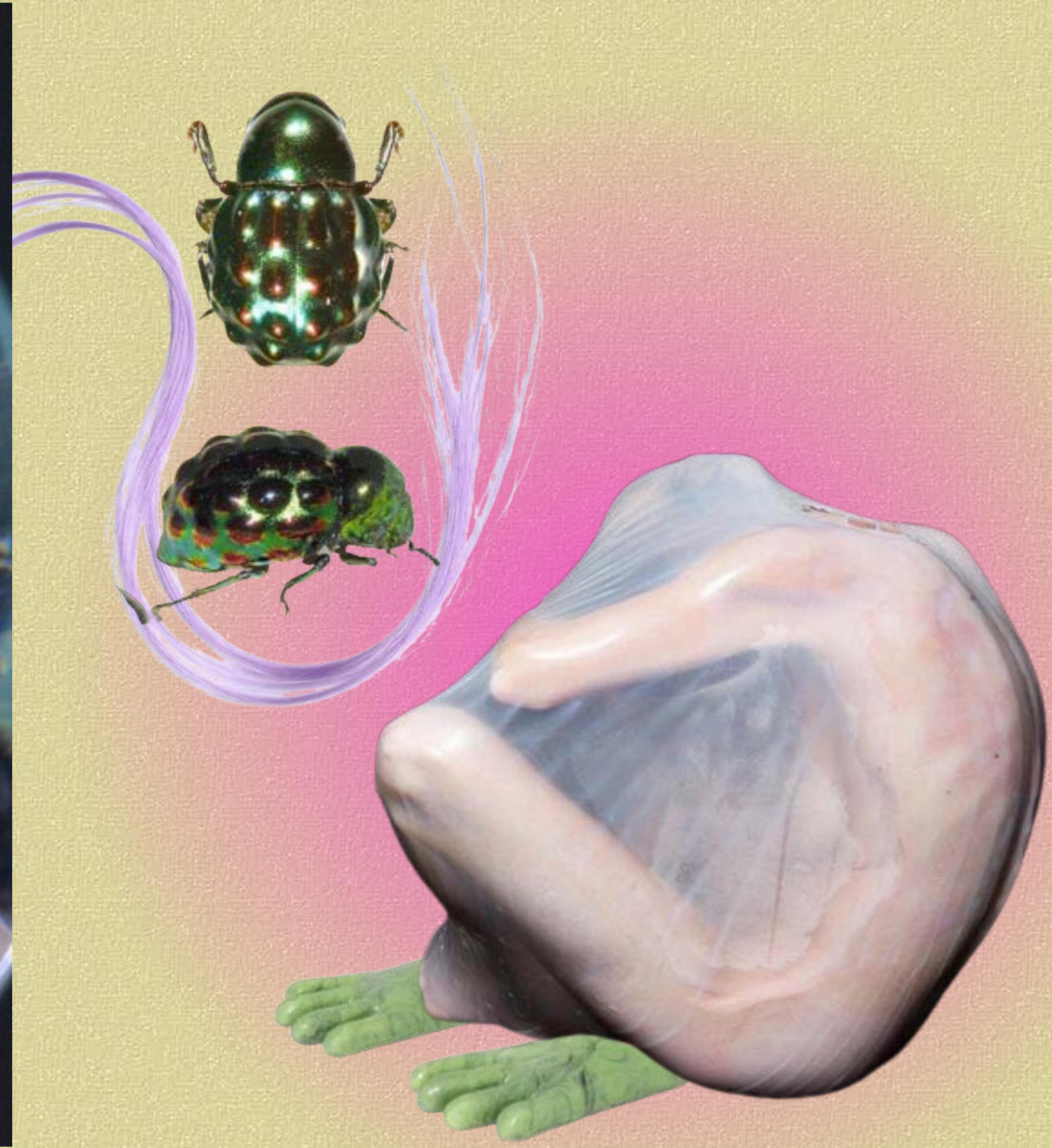
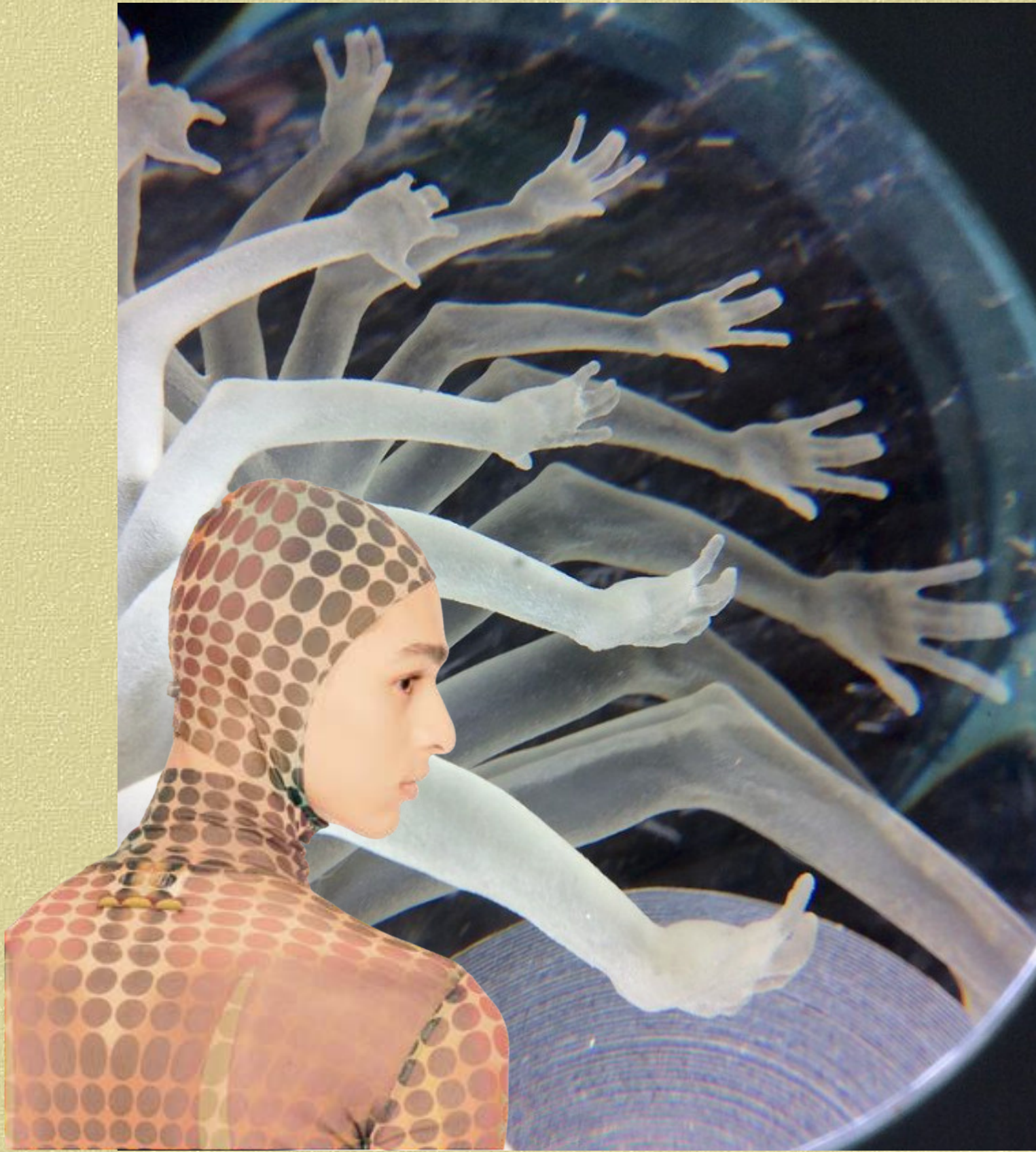
Let me introduce myself—I am Tilda Sinagra, commonly known as 'tildduh.' Recently, I proudly earned my degree in fashion and costume design from LCI, marking the beginning of my creative journey in design. My design philosophy is a dynamic fusion of innovation and tradition.

In my work, I am drawn to the extraordinary. I craft garments and costumes that captivate the eye through unconventional patterns and textiles, many of which I painstakingly create myself. I embrace time-honored techniques like crocheting, knitting, and embroidery, weaving them seamlessly into contemporary design. These methods not only lend authenticity to my creations but also tell a story of craftsmanship that resonates in every piece.

One unique aspect of my work is my devotion to sustainability. Collaborating with other artists and friends, I endeavor to craft garments and costumes that embrace eco-consciousness. In a world of fast fashion, my designs are a statement of sustainability, a bridge between artistry and environmental responsibility.

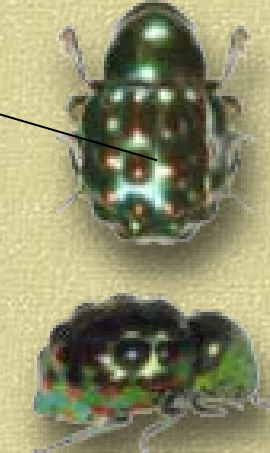


Gastropoda



METAMORPHOSIS INSECTA

Chrome Shell



Multi-lens



Folds



Hidden silhouette



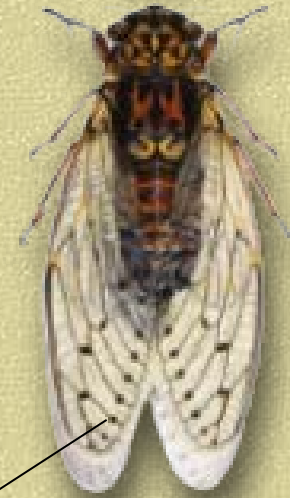
Exoskeleton



Hairy

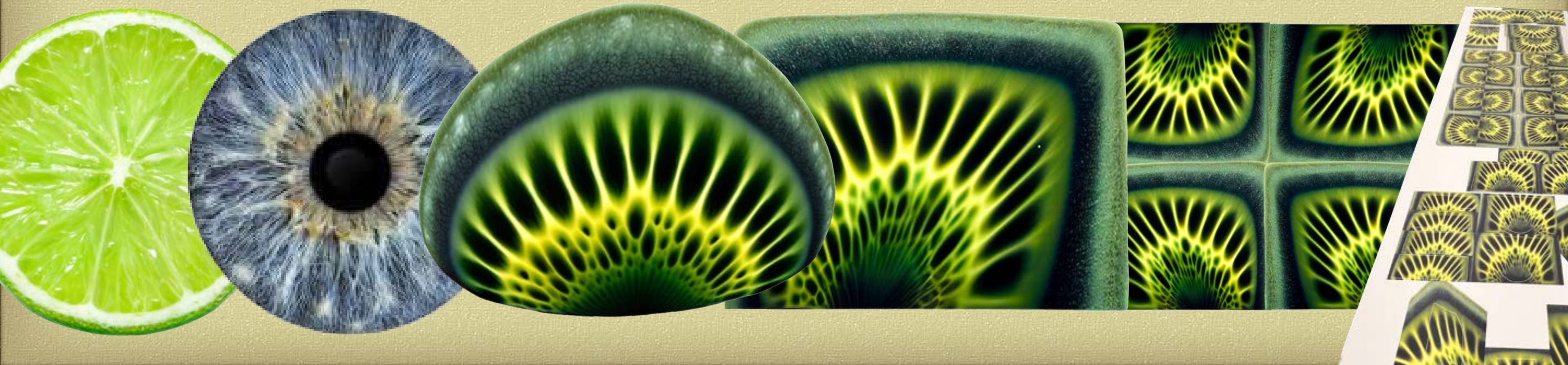
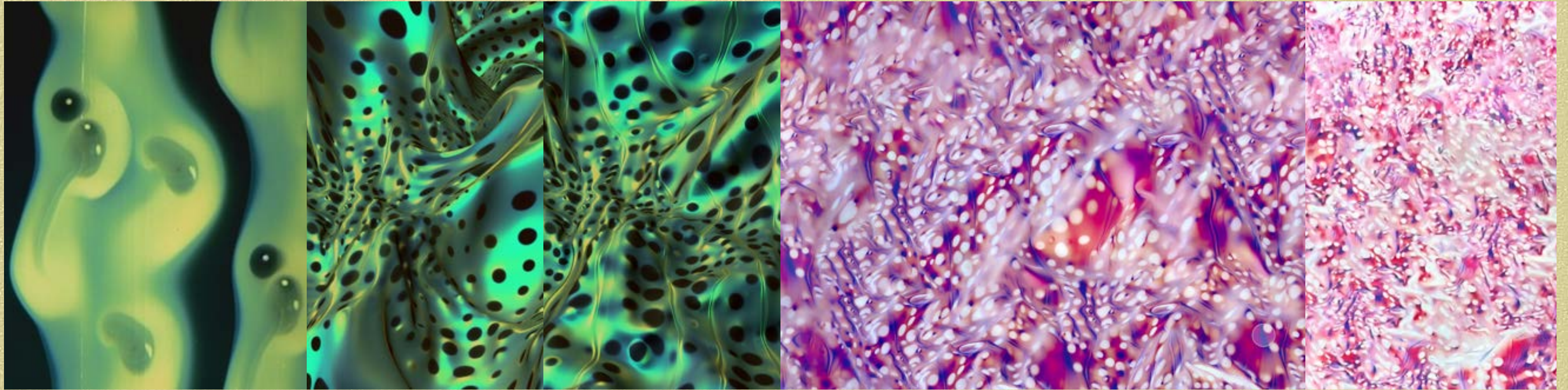


Iridescent

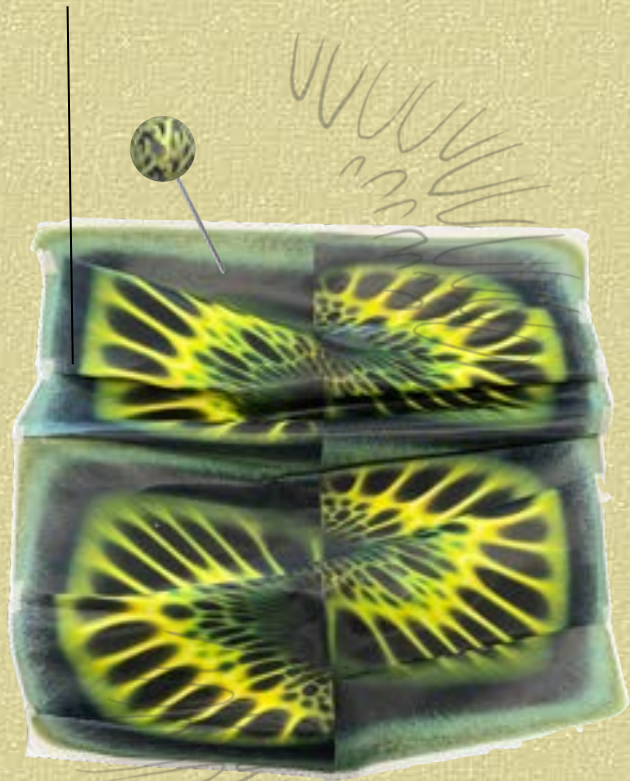




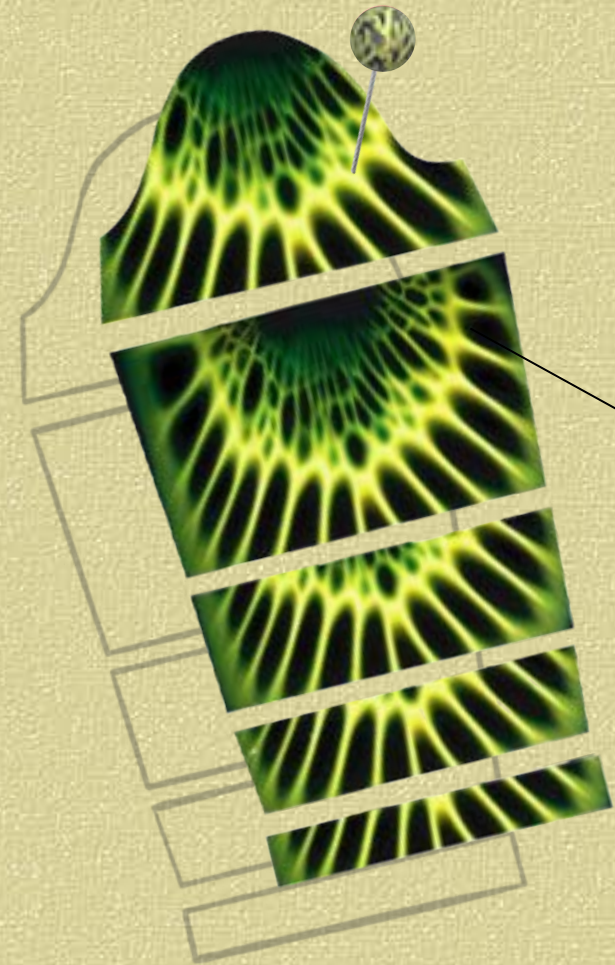
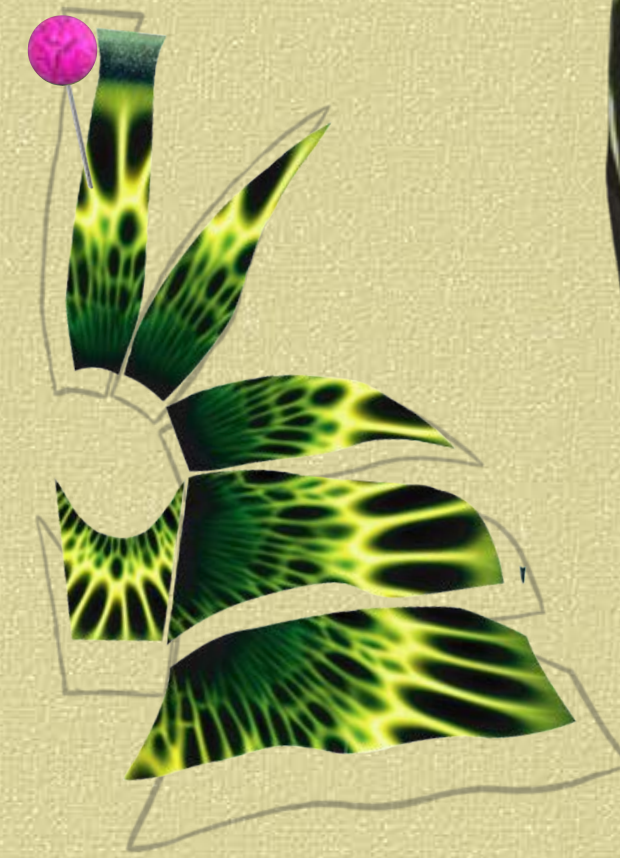
AI - MIDJOURNEY



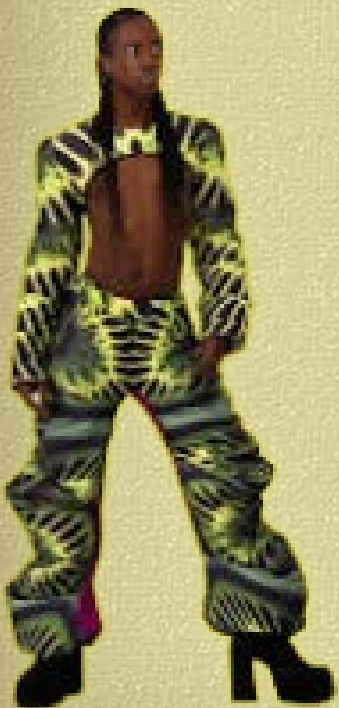
Pleated Paper Pattern Toile

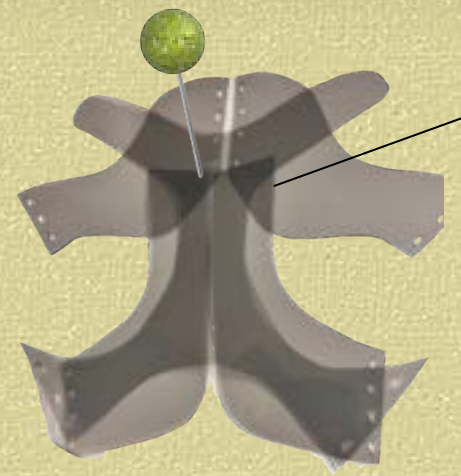
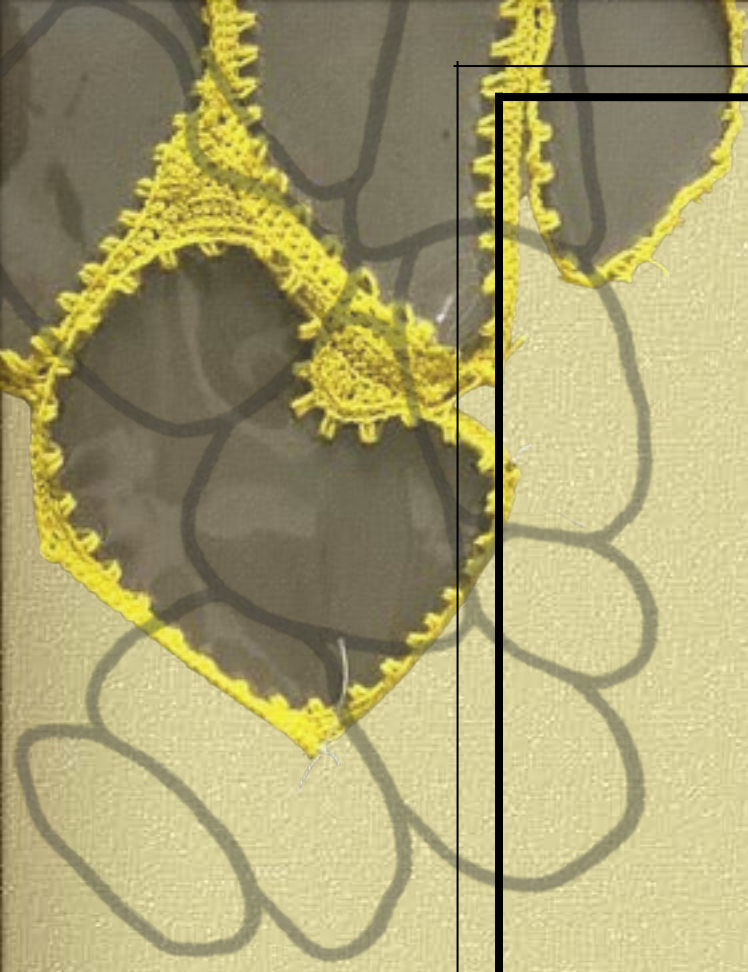


Folds

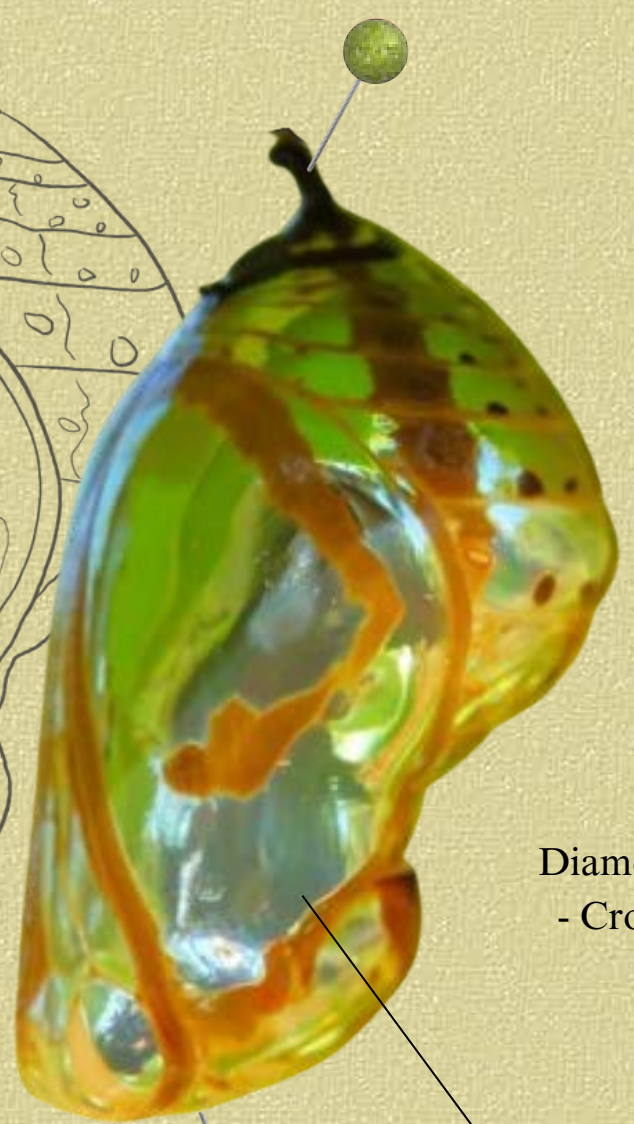
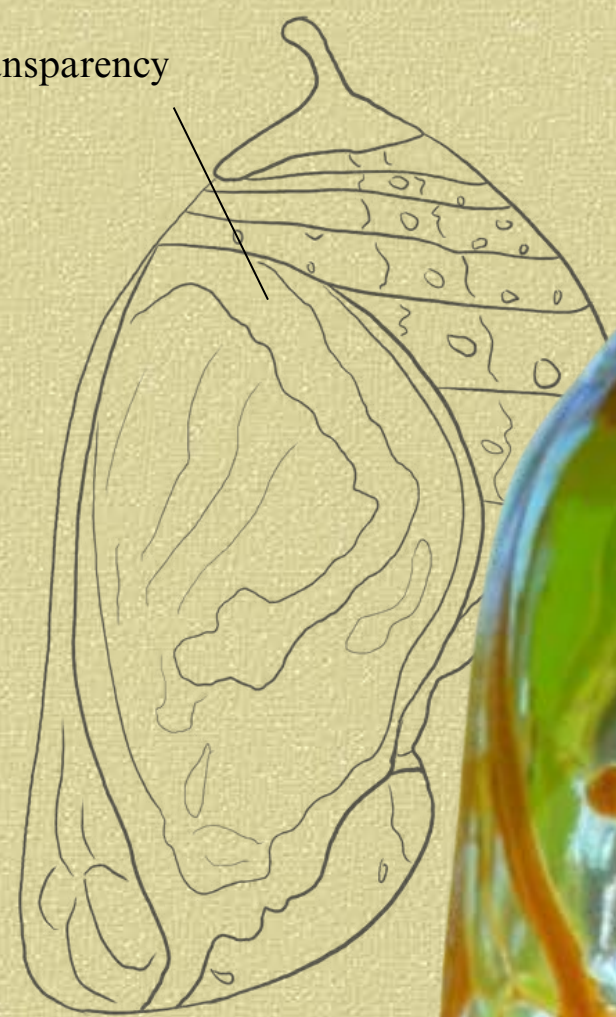


Digital Pattern - Nextstate

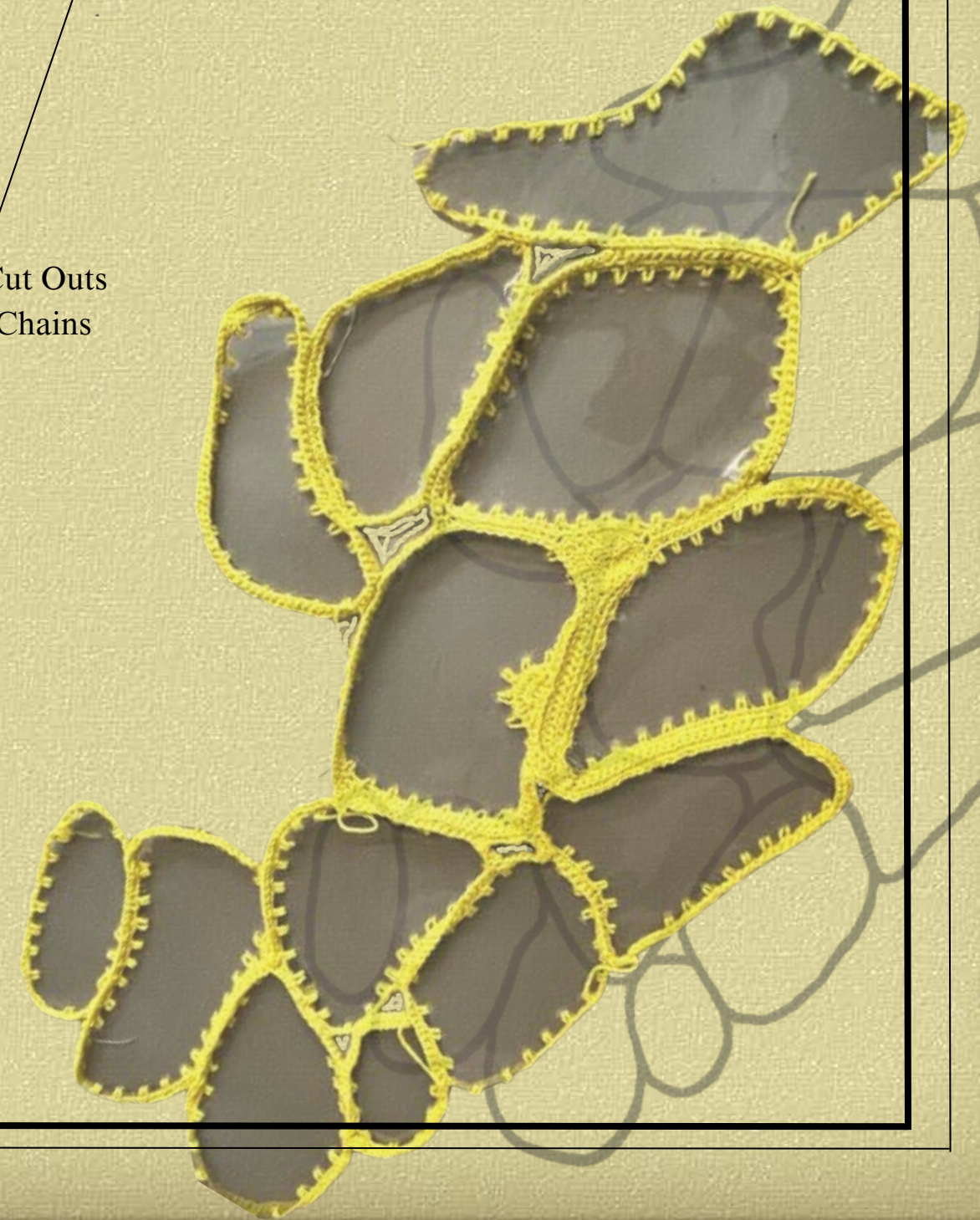




Transparency

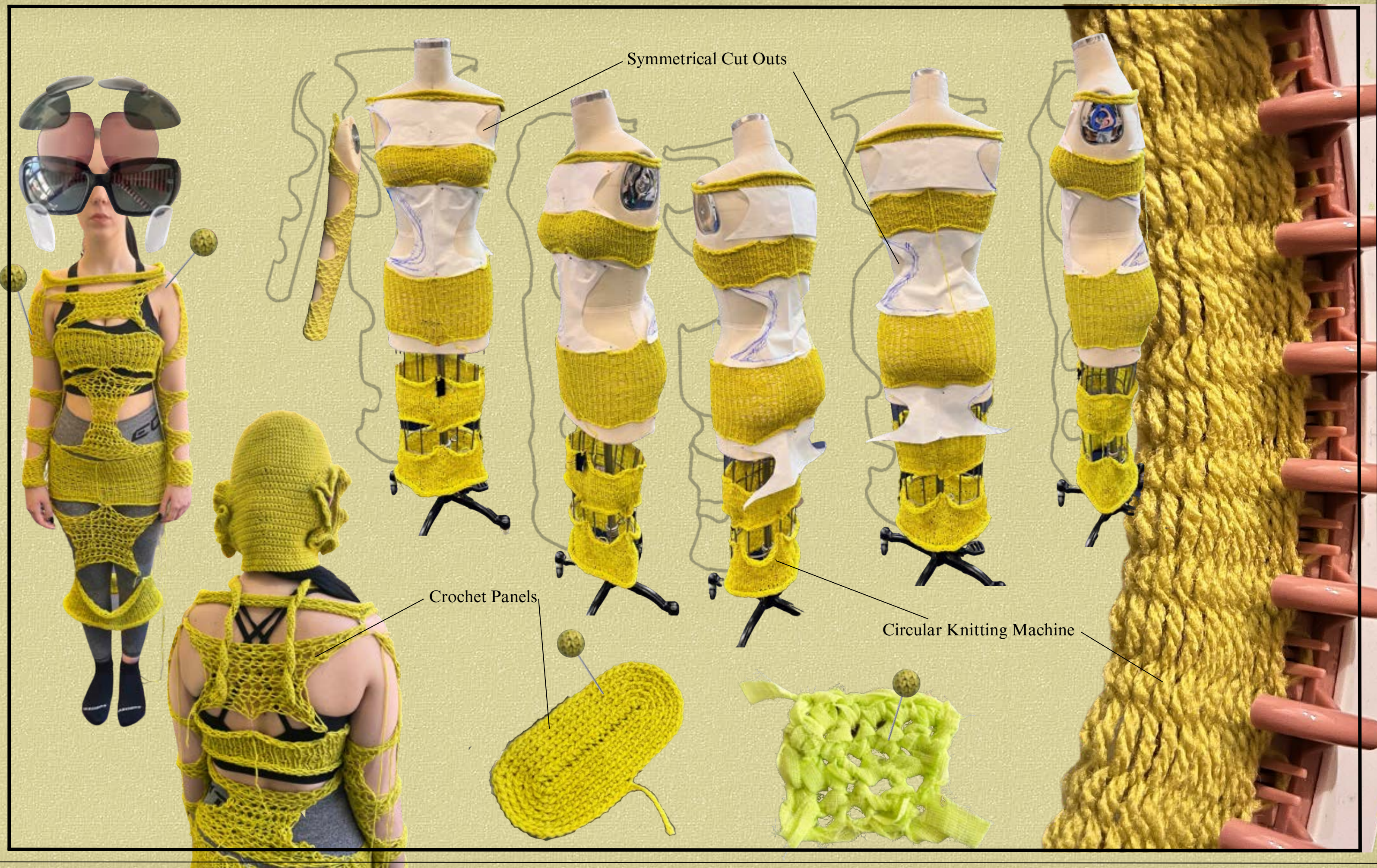


Diamond Cut Outs
- Crochet Chains



Chrysalis





Symmetrical Cut Outs

Crochet Panels

Circular Knitting Machine





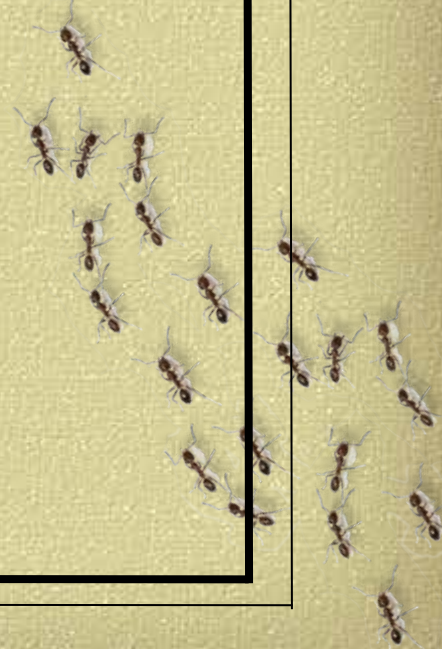
Folds

Dark Grey Hardware

3m Reflective/ Iridescent

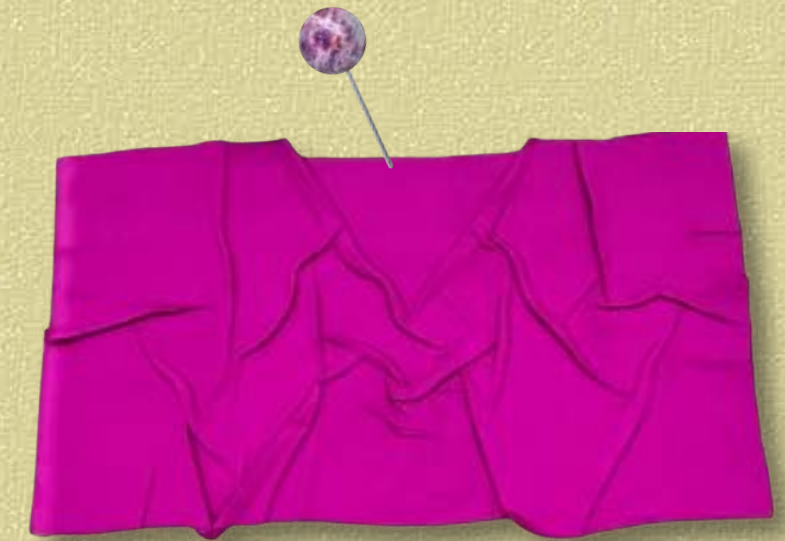
Tiered Toile

Rounded Silhouette





Crumpled Butterfly Wings



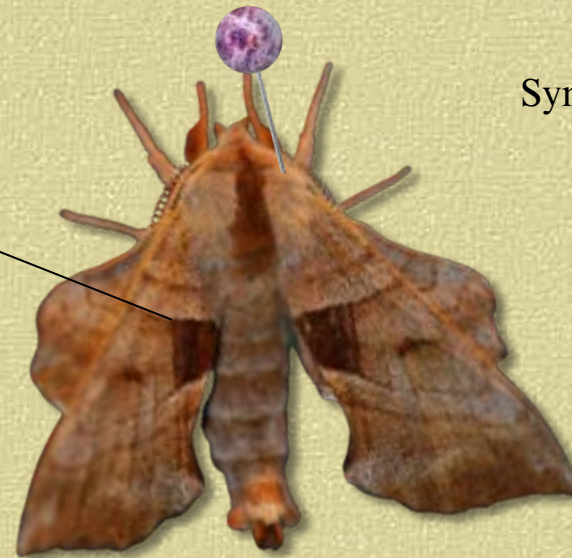
Large Creasing on Fusing



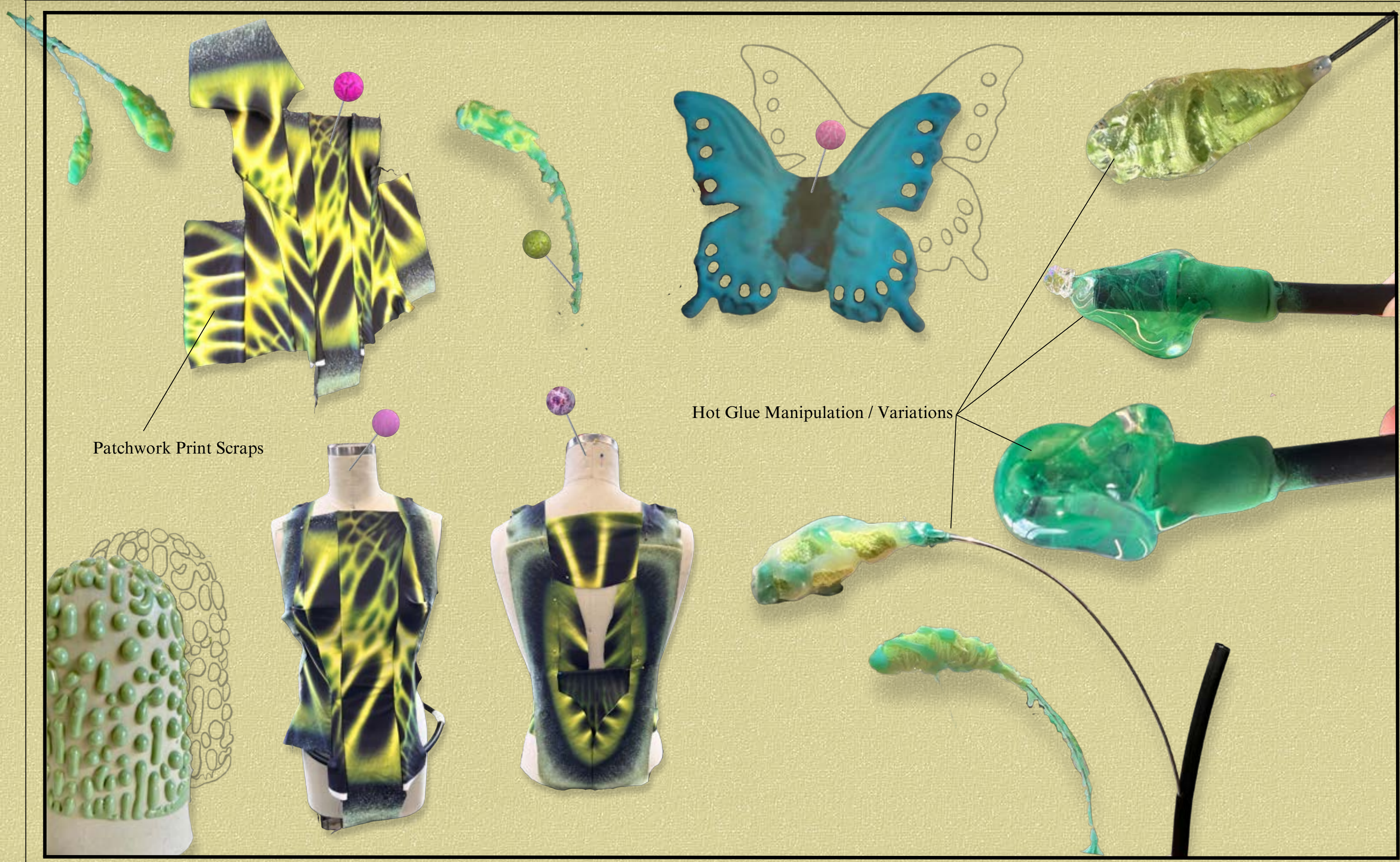
Thin Creasing on Fusing



Crumpled Moth

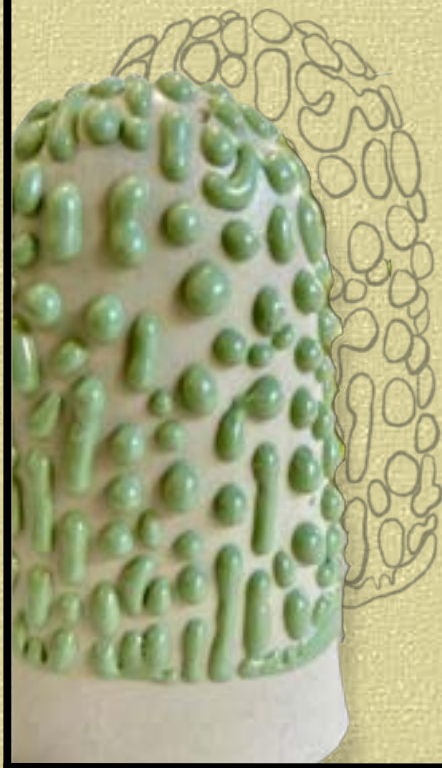


Symmetrical Pinning to Unsymmetrical manipulation



Patchwork Print Scraps

Hot Glue Manipulation / Variations





Single Layer V double Layer
- Power Mesh

Misshapen / Symmetrical
Lumps

Dead Stock Cotton Gauze

Symmetrical Lump
Mowhawks





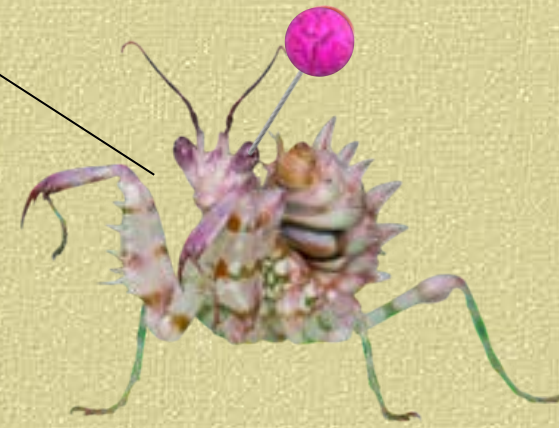
Adaption of Hoop Skirt



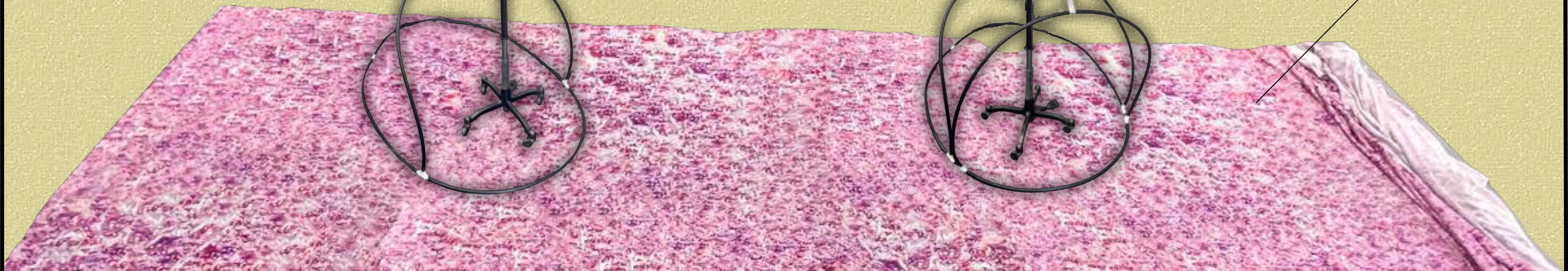
Camouflage stick insect



Warping Upper Body Silhouette

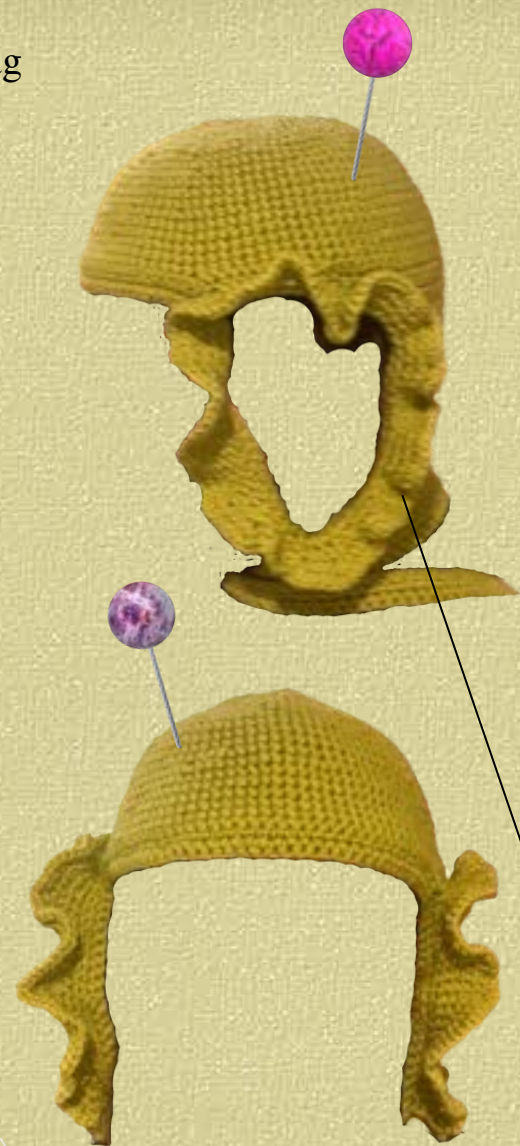


Ai Print - Nextstate
Photoshop Repeat Pattern

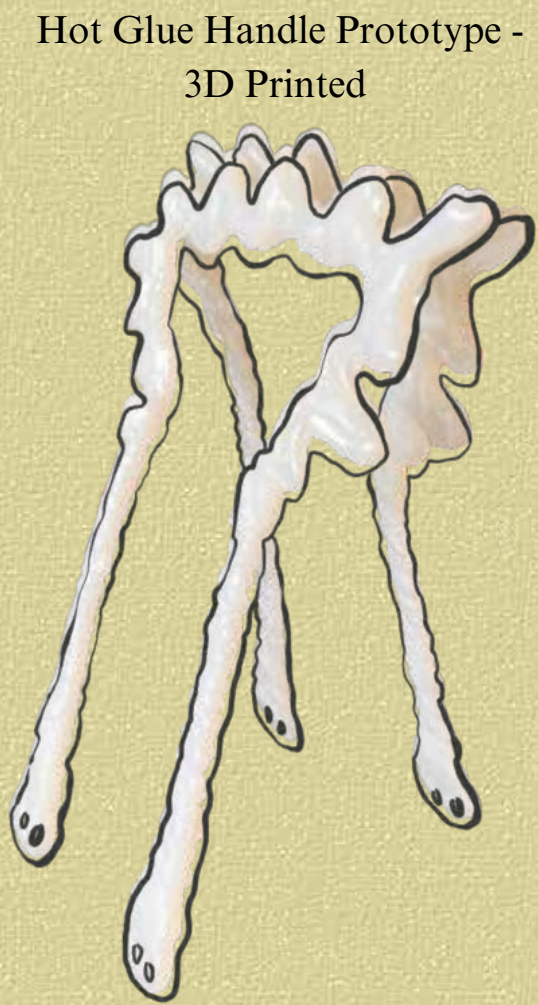




Hair Bag



Crochet Beanie With Ear Hole



Hot Glue Handle Prototype - 3D Printed



Multi Lens Bug Eye Glasses

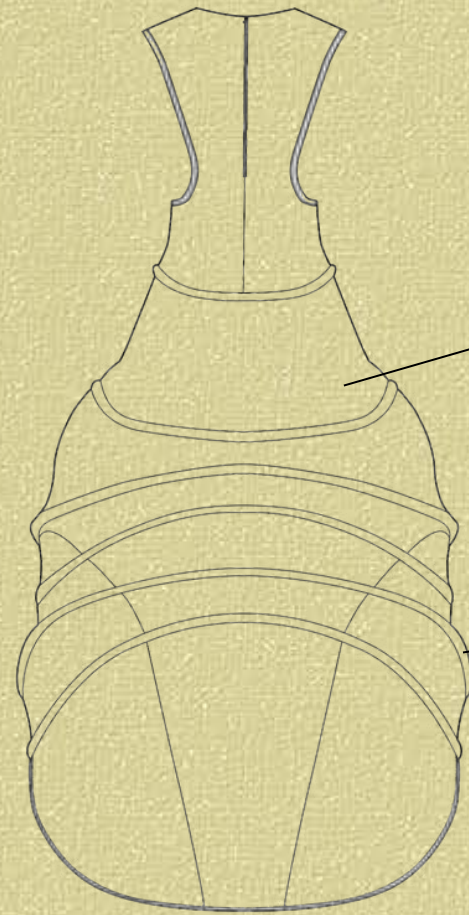


Crochet Earpiece



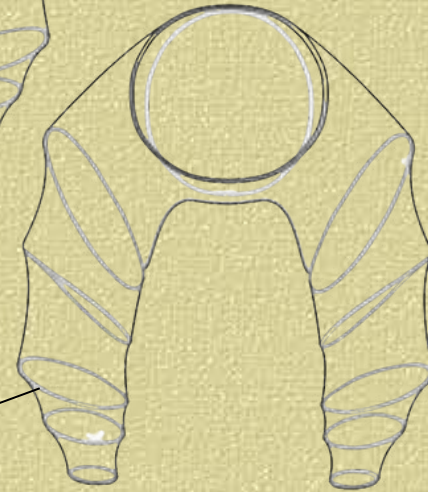
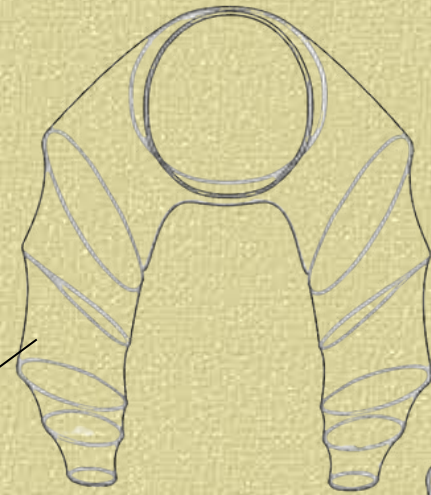
Initial Hot Glue Hair Manipulation



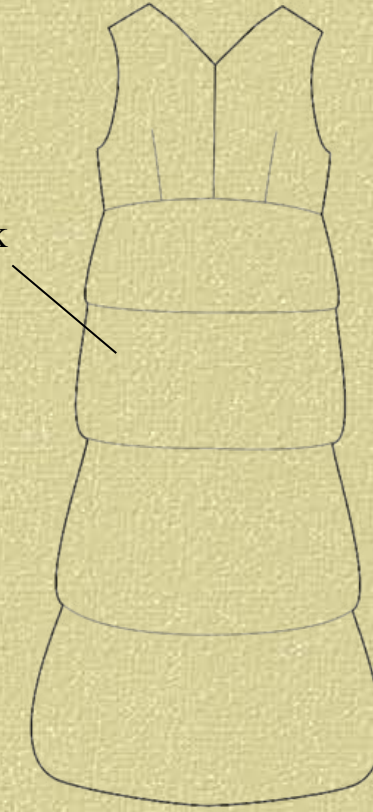


Mesh

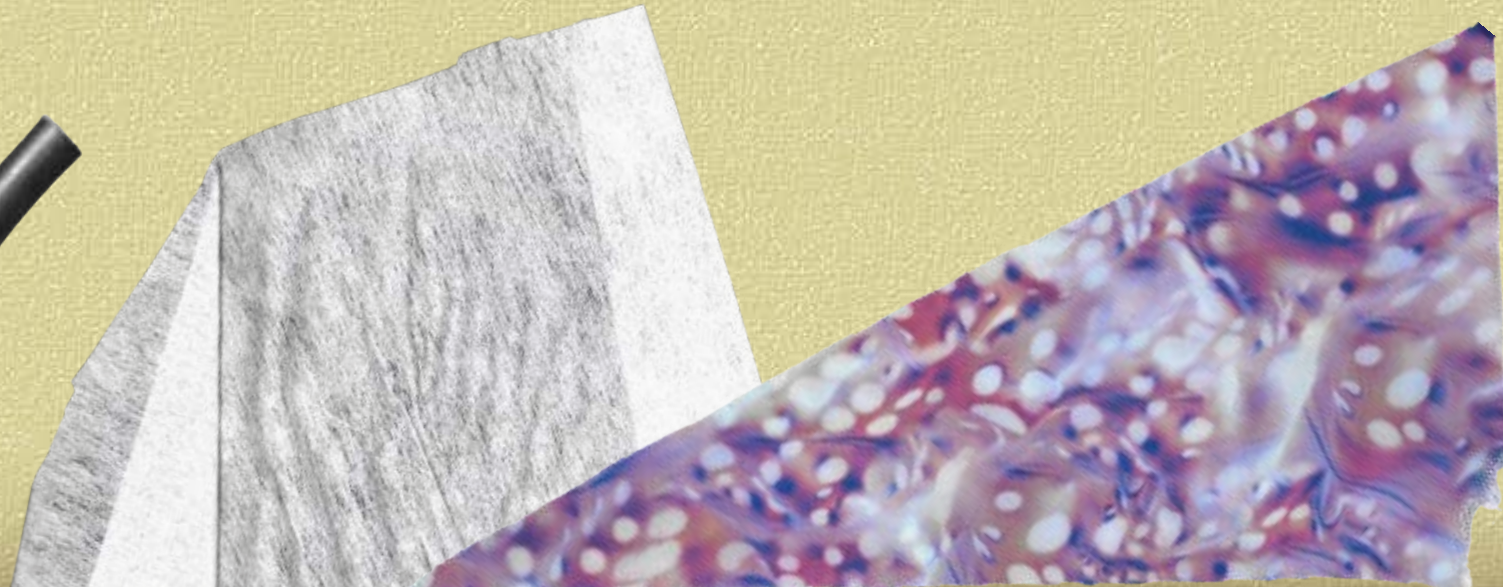
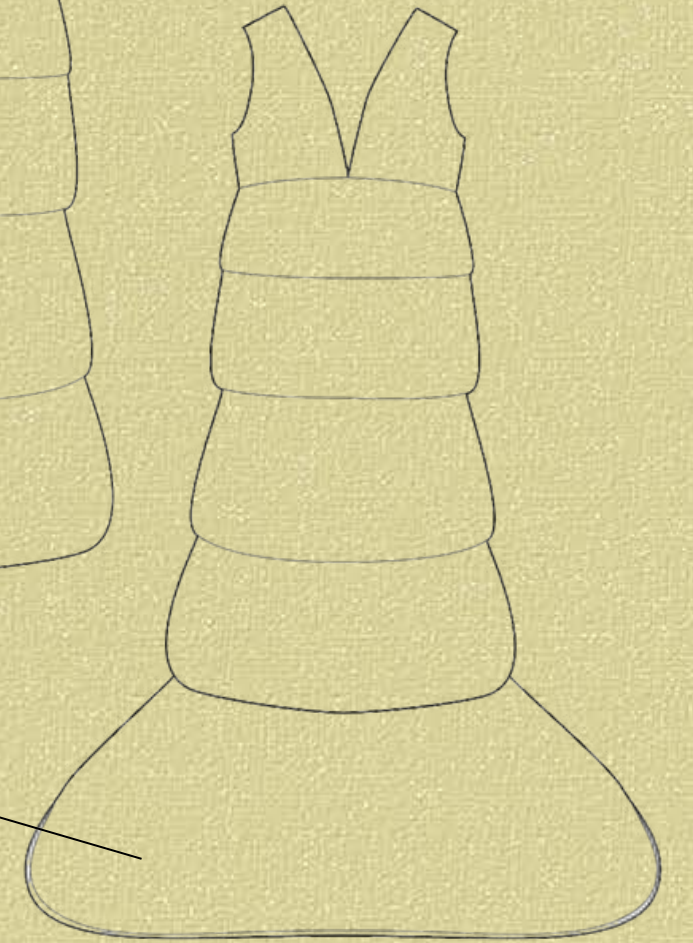
Tubing Hard
Rubbish

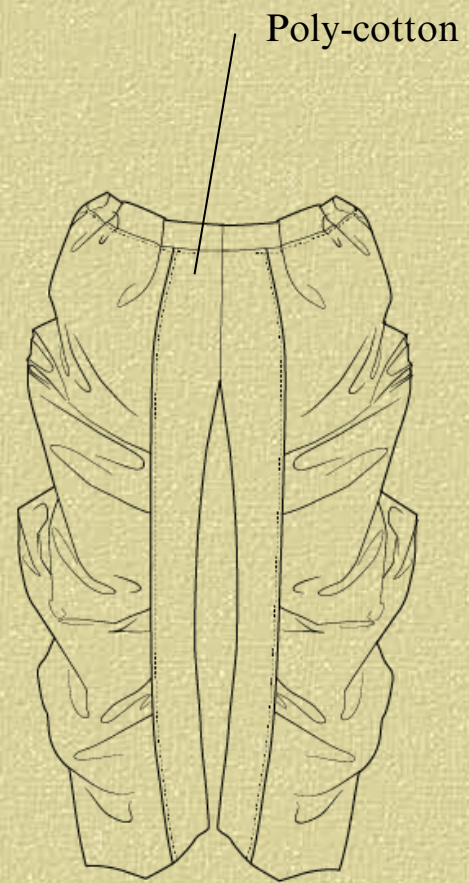
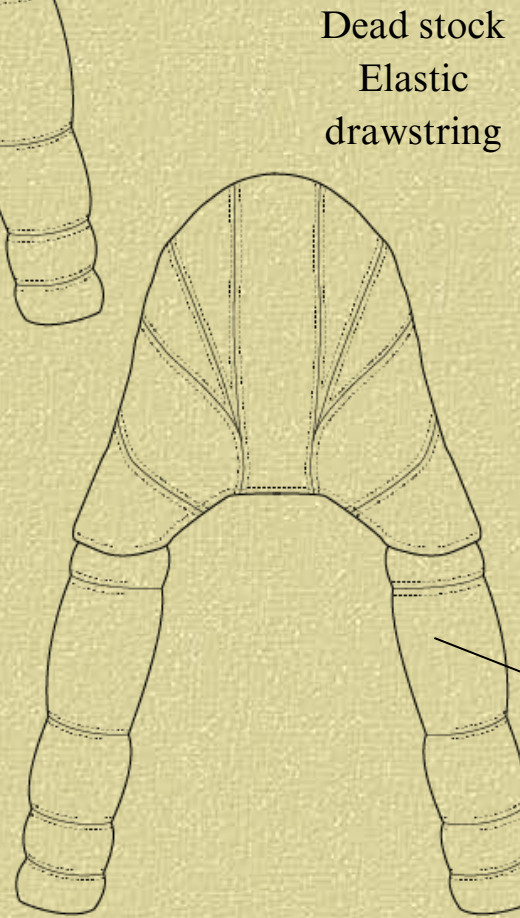
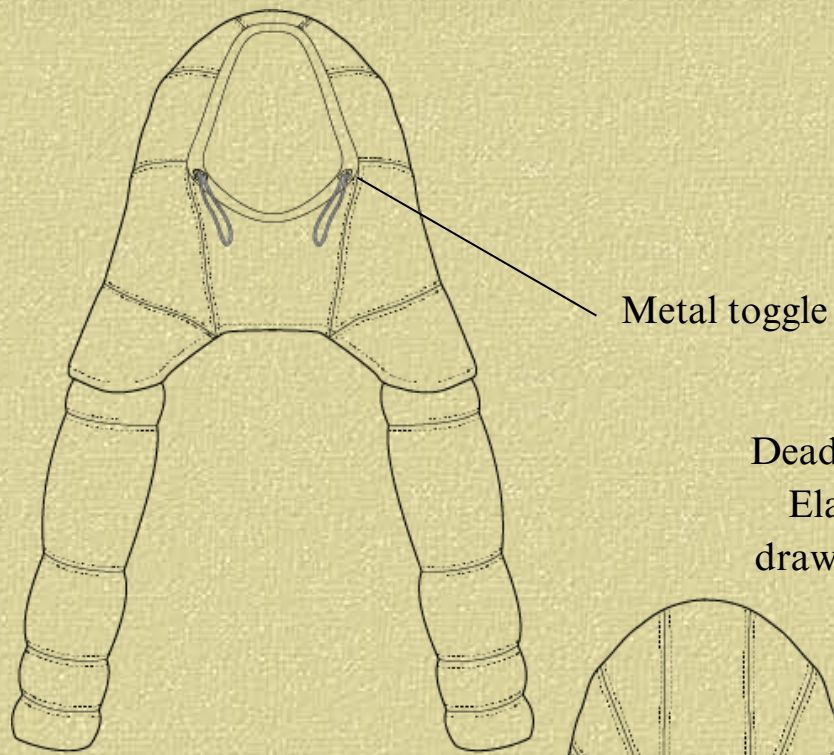


Dead stock
Canvas

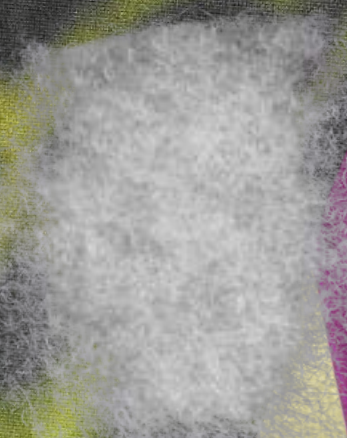


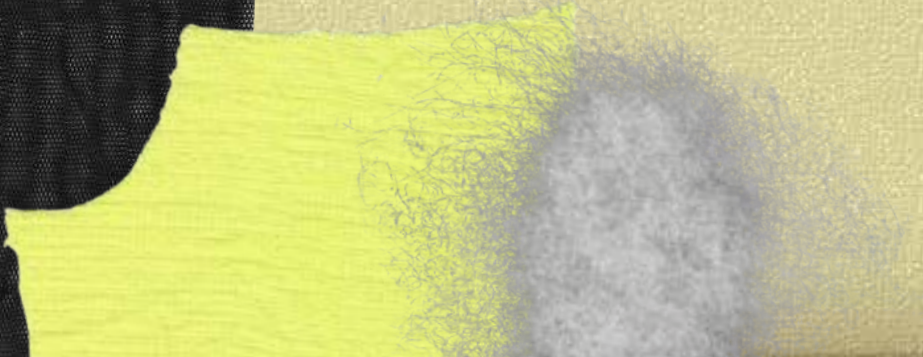
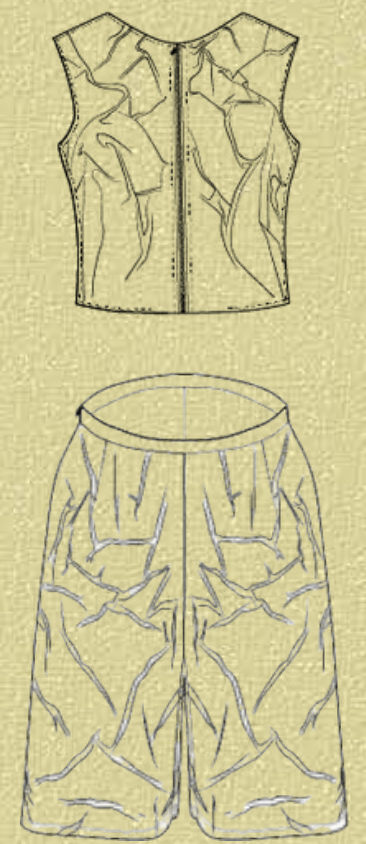
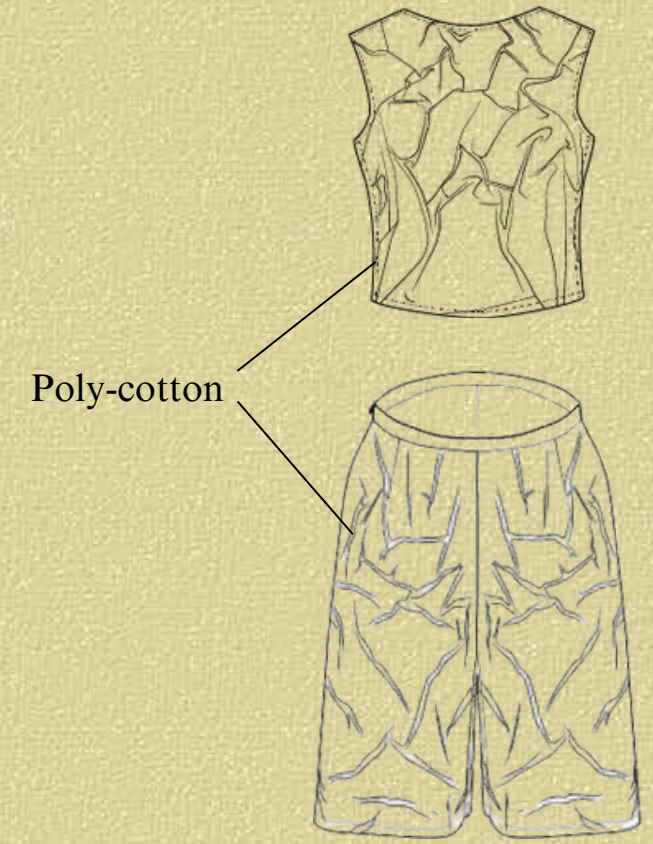
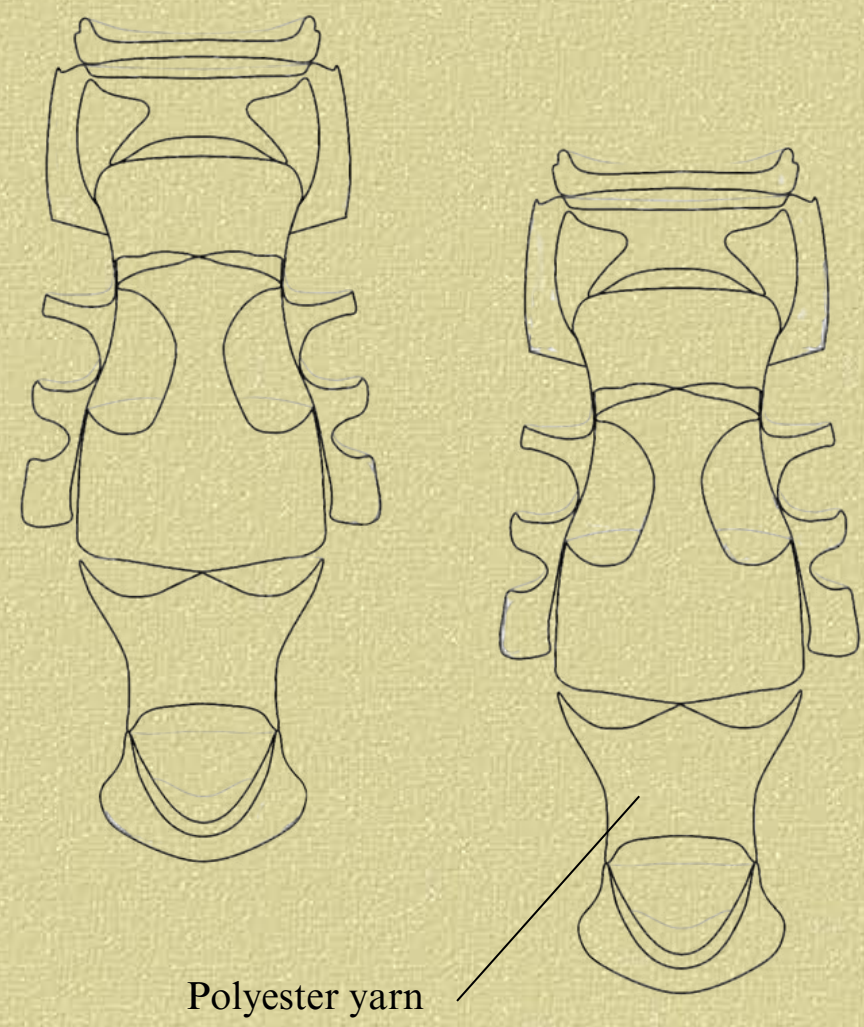
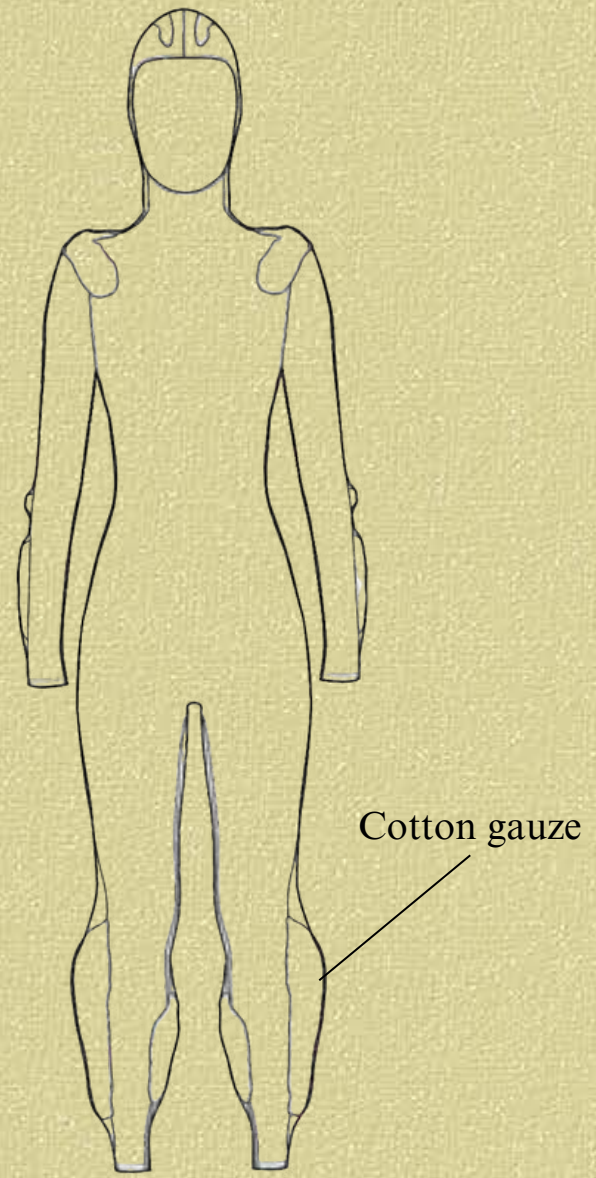
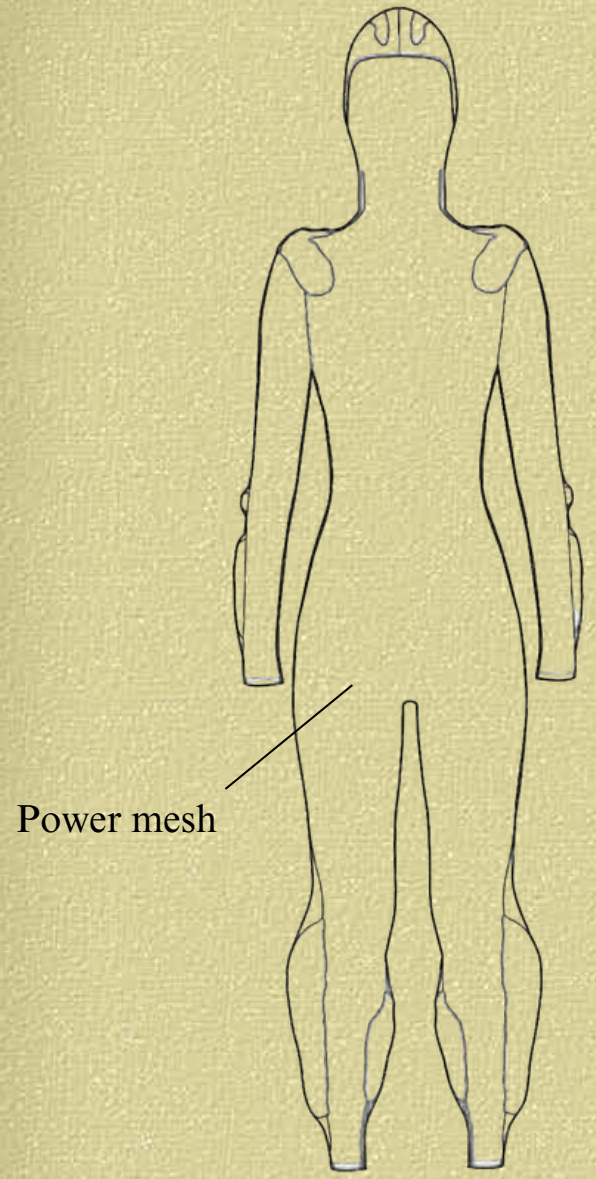
3m

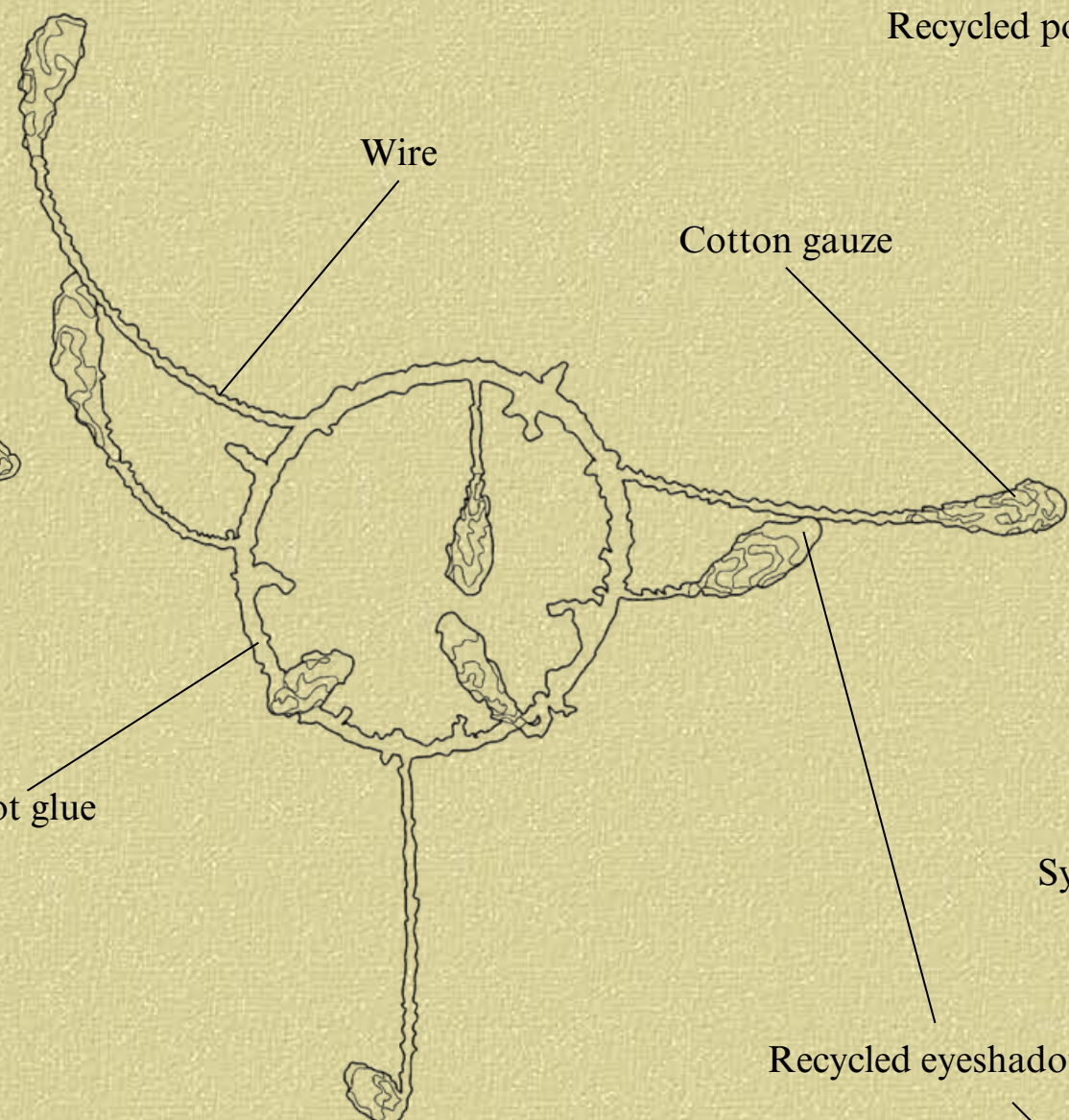
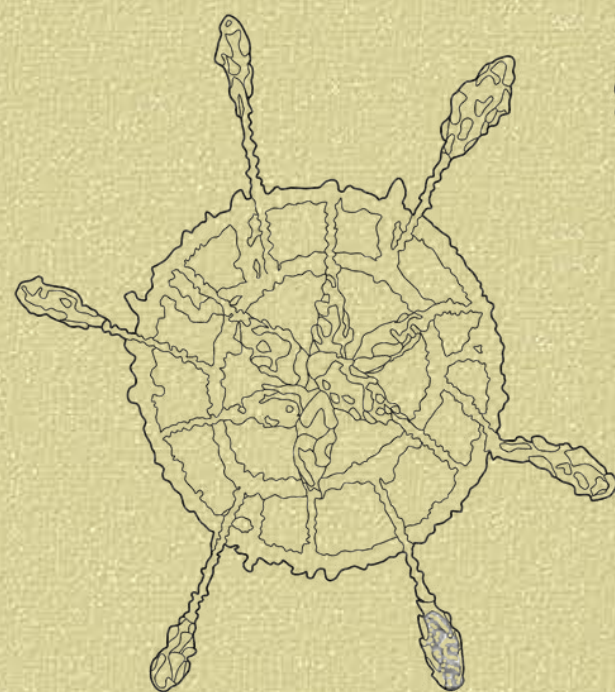




Recycled pvc







Recycled polyester

Metal hoop

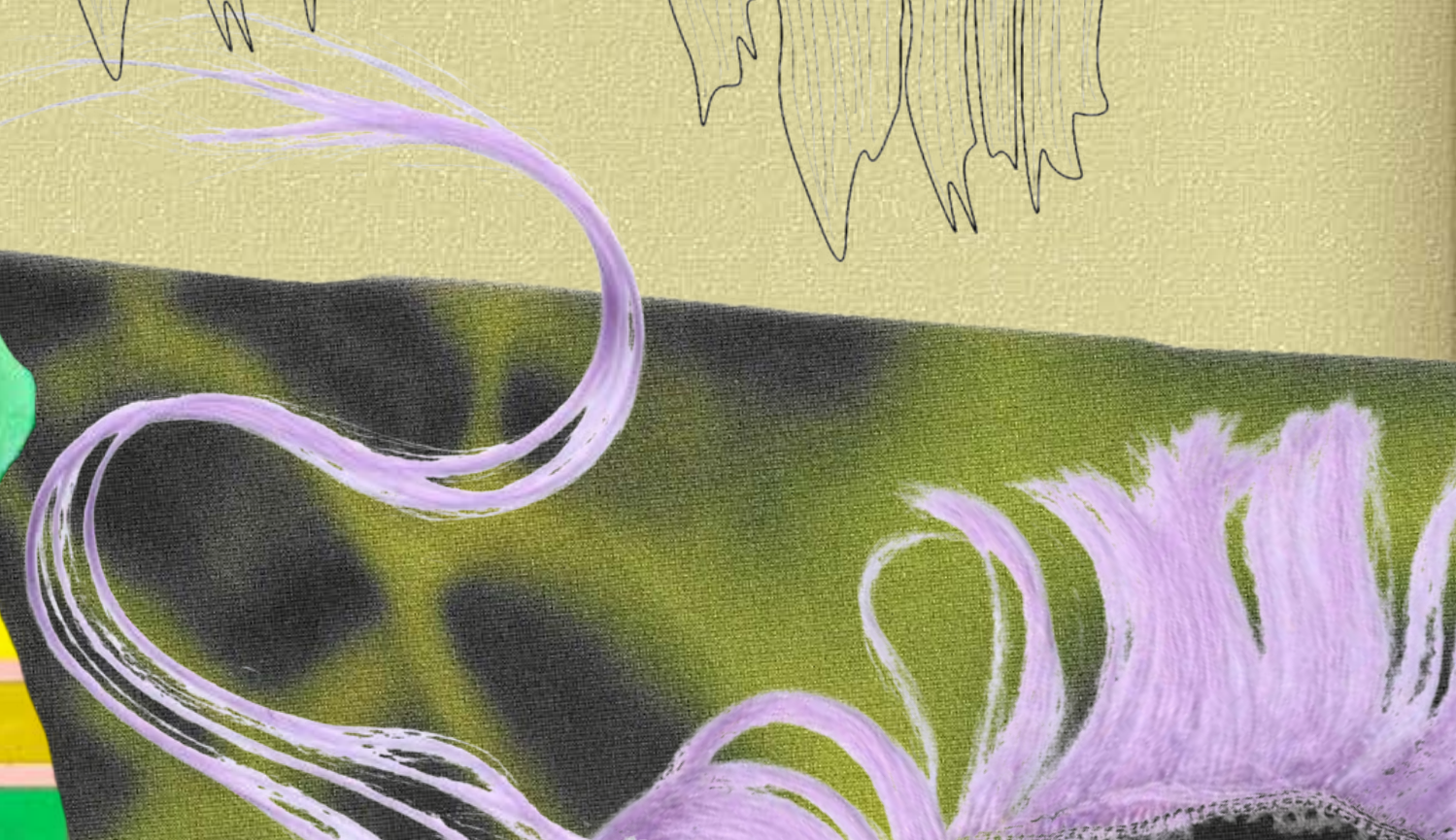
Wire

Cotton gauze

Hot glue

Synthetic hair

Recycled eyeshadow





METAMORPHOSIS INSECTA

MATHILDA SINAGRA